



Barnsdale Road

Allerton Bywater, Castleford, WF10 2AX
£425,000



SIGNATURE

BY

Emsleys | estate agents

Barnsdale Road

Allerton Bywater, Castleford, WF10 2AX

* GRADE II LISTED GATE KEEPERS LODGE * 0.19 ACRE PLOT * IMMACULATELY PRESENTED INSIDE & OUT * UNIQUE PROPERTY * DOUBLE GARAGE * EXTENSIVE PRIVATE GARDENS *

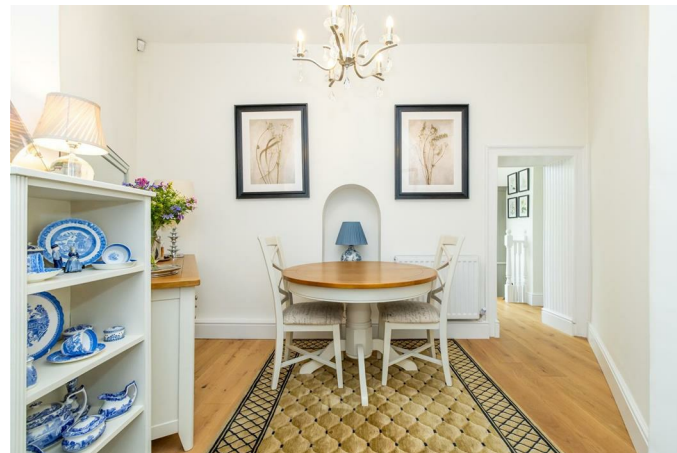
Immaculately presented stone Grade II listed detached gate keepers lodge, set within private, non-overlooked manicured plot of approximately 0.19 acres. Unique opportunity to purchase this stunning home, providing two bedrooms, the property combines period character with carefully considered modern high quality finishes - such as Oak flooring, neutral decoration through out to name but a few.

The newly refitted luxury kitchen features quartz counter-tops with deviled edges, Belfast sink, built-in appliances and excellent natural light, creating a practical and well-appointed cooking and dining space within the open plan sun room. The cozy lounge boasts mullion dual aspect windows and a wood burning stove, offering a focal point and relaxing area. The open plan sun room, enjoys garden views and direct access to the well maintained grounds.

The generous bathroom is finished to a high specification, including a free-standing bath with claw feet, walk-in rain shower, heated towel rail and marble-topped basin unit. Both bedrooms benefit from built-in wardrobes, with the main bedroom providing floor to ceiling storage together with feature mullion windows.

Externally, the property offers off road parking to the front, with secure electric gated access. There is a double garage located to the rear, with attached garden store. The substantial gardens that surround the lodge, are truly remarkable. They offer paved and lawned areas, well stock beds, stunning water feature and useful greenhouse. There is a pretty covered seating area, within the grounds, with feature oak pillars, offering a secluded area to enjoy all year around.

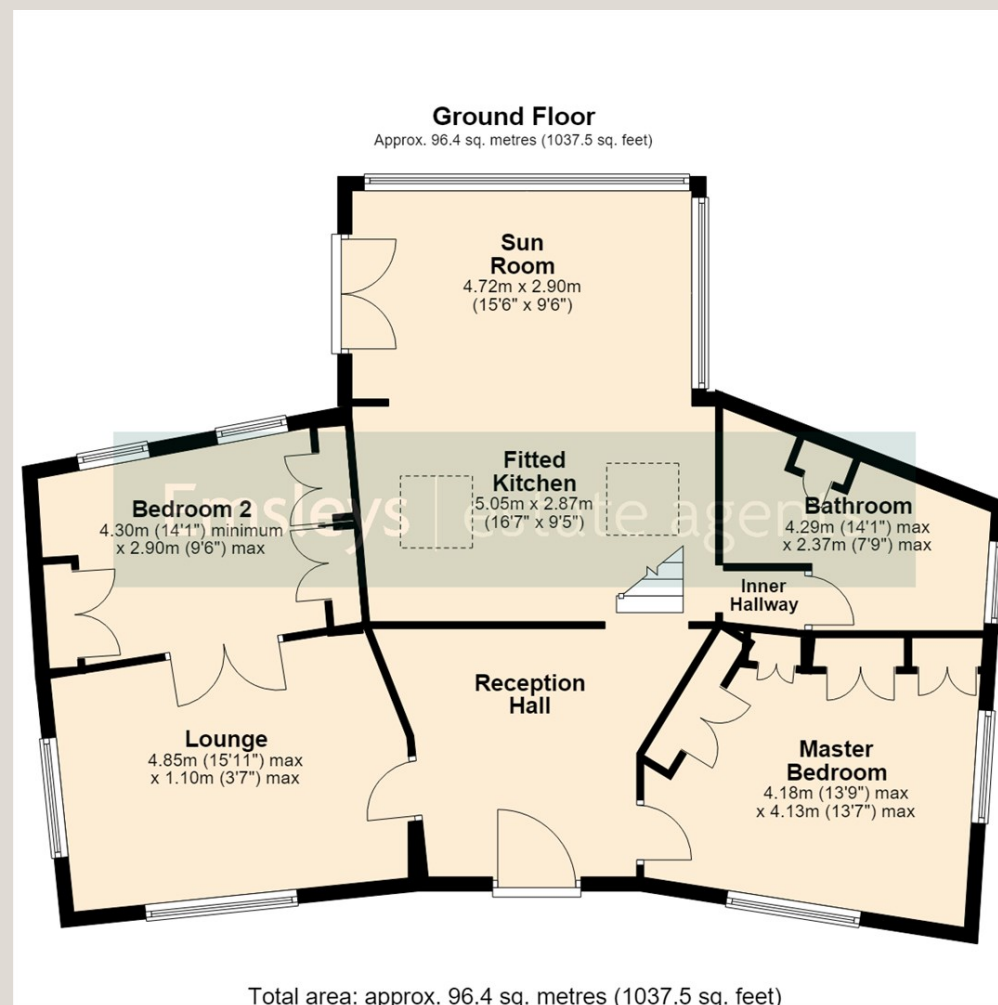
- GRADE TWO LISTED STONE DETACHED GATE KEEPERS LODGE
- 0.19 ACRE PLOT, WITH WELL MAINTAINED & WELL PLANTED PRIVATE GARDENS
- DOUBLE GARAGE AND ELECTRIC GATED ACCESS
- IMMACULATELY PRESENTED AND FULLY MODERNISED THROUGH OUT
- HIGH SPECIFICATION FITTED KITCHEN WITH QUARTZ WORKTOPS & BUILT-IN APPLIANCES
- GENEROUS BATHROOM WITH FREE STANDING CLAW FOOT BATH & WALK-IN SHOWER
- BUILT-IN WARDROBES TO BOTH BEDROOMS
- COUNCIL TAX BAND D & EPC RATING F











6 Main Street, Garforth
Leeds LS25 1EZ

t. 0113 286 4000

e. garforth@emsleysestateagents.co.uk

www.emsleysestateagents.co.uk

35 Austhorpe Road, Crossgates
Leeds LS15 8BA

t. 0113 284 0120

e. crossgates@emsleysestateagents.co.uk

4 Wolsey Parade,
Sherburn in Elmet LS25 6BQ

t. 01977 680 088

e. sherburn@emsleysestateagents.co.uk

65 Commercial Street, Rothwell
Leeds LS26 0QD

t. 0113 201 4040

e. rothwell@emsleysestateagents.co.uk

These details are for guidance only and complete accuracy cannot be guaranteed. If there is any point, which is of particular importance, verification should be obtained. They do not constitute a contract or part of a contract. All measurements are approximate. No guarantee can be given with regard to planning permissions or fitness for purpose. No apparatus, equipment, fixture or fitting has been tested. Items shown in photographs are NOT necessarily included. Interested Parties are advised to check availability and make an appointment to view before travelling to see a property.



SIGNATURE

BY

Emsleys | estate agents